

[DIVISARE \(/\)](#)[ROBERT HIRSCHFIELD ARCHITECTS \(/AUTHORS/2144803976-ROBERT-HIRSCHFIELD-ARCHITECTS\)](#)
['OPEN HOUSE'](#)

An extensive redevelopment of an Edwardian semi- detached house in north London, dramatically re-ordering rooms and extending the house to the rear to meet the evolving needs of a couple and their teenage children.



[\(/projects/334529/images/5555856/zoom\)](#)

© MATT CLAYTON

[ADD TO COLLECTION](#)

A large period house required significant untangling from its congested internal layout in order to rationalise and re-configure its interior spaces. It also had a lack of connectedness to its generous outdoor spaces and an under-exploited loft area.



[\(/projects/334529/images/5555857/zoom\)]((/projects/334529/images/5555857/zoom))

© MATT CLAYTON

[ADD TO COLLECTION](#)

The original living and service areas of the house were dark, cramped and restrictive to family shared spaces. Our solution was to reconfigure the layout of each floor and expand the house to create a spacious living area to the rear of the ground floor with a large glazed structure that frames the newly landscaped garden and terrace.

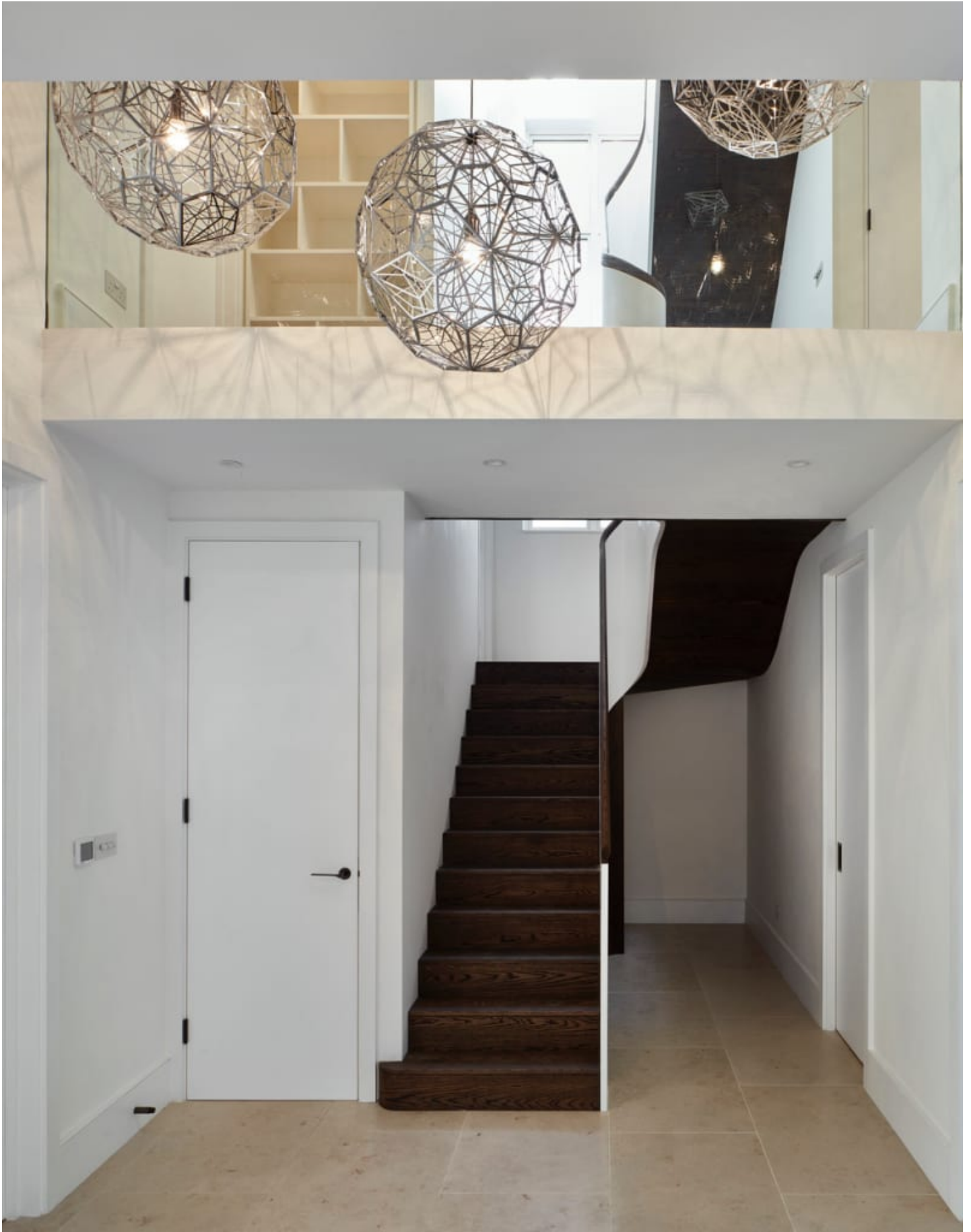


[\(/projects/334529/images/5555858/zoom\)]((/projects/334529/images/5555858/zoom))

© MATT CLAYTON

[ADD TO COLLECTION](#)

The re-configured floors have given the family generous sized rooms with an interesting play of level changes and volumes that can now be fully shared and enjoyed. These are connected by a new helical staircase with a ribbon-like handrail that curves as it ascends in parallel with the central double-height void.



[\(/projects/334529/images/5555859/zoom\)](http://projects/334529/images/5555859/zoom)

© MATT CLAYTON

[ADD TO COLLECTION](#)

The new loft bedroom and en-suite bathroom are proud possessors of their own private recessed terrace that has cleverly and discretely been carved into the pitch of the roof.

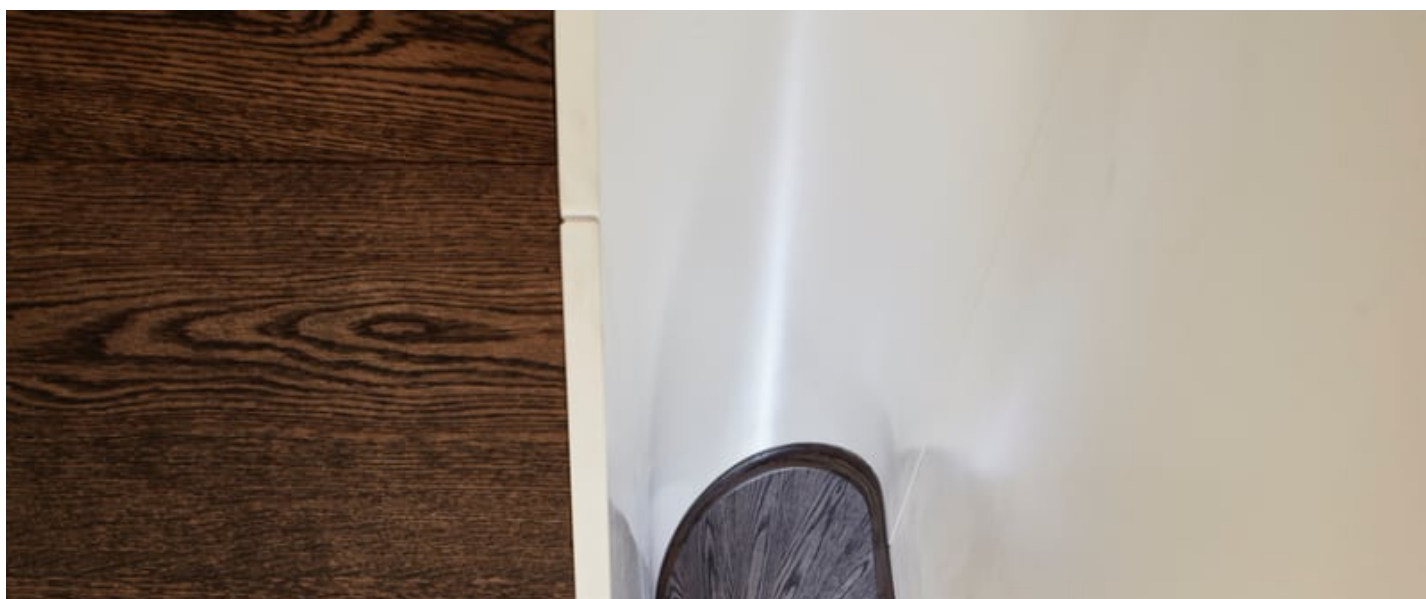


[\(/projects/334529/images/5555860/zoom\)]((/projects/334529/images/5555860/zoom))

© MATT CLAYTON

[ADD TO COLLECTION](#)

The bathrooms, bedrooms and living spaces have bespoke built-in joinery, storage spaces and shelving all of which have been fully integrated into the overall concept and design.



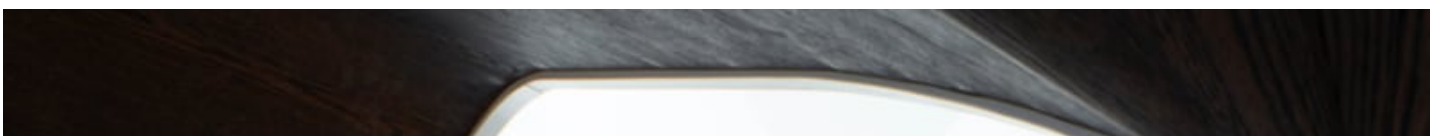


[\(/projects/334529/images/5555861/zoom\)](http://projects/334529/images/5555861/zoom)

© MATT CLAYTON

[ADD TO COLLECTION](#)

The interior design of the house consists of a number of distinguishing features including a bespoke timber staircase that is conceived as a single object stretching between the ground, first and second floors.





(/projects/334529/images/5555862/zoom)

© MATT CLAYTON

[ADD TO COLLECTION](#)

The central form comprises a solid helical balustrade that 'hangs' down the middle of the void with the stair wrapping around it. The elegant lacquered balustrade is capped with a continuous moulded handrail, hand carved from oak to match the fluid underside that follows the curves of the staircase.





[\(/projects/334529/images/5555863/zoom\)]((/projects/334529/images/5555863/zoom))

© MATT CLAYTON

[ADD TO COLLECTION](#)

Throughout the house, the warmth and texture of the wood grain used for the staircase has been emphasised in floor finishes and worktops elsewhere.



[\(/projects/334529/images/5555864/zoom\)]((/projects/334529/images/5555864/zoom))

© MATT CLAYTON

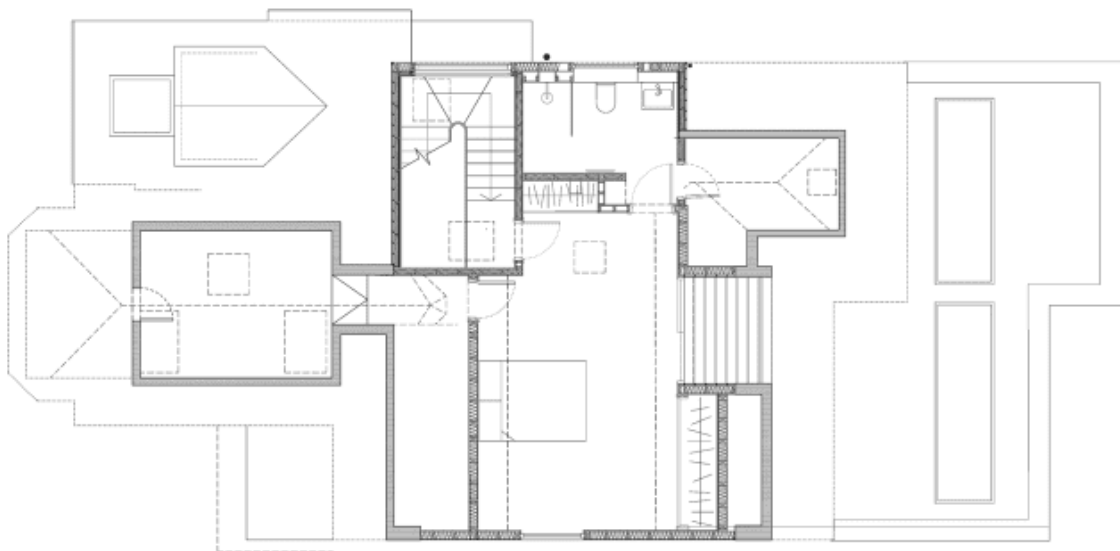
[ADD TO COLLECTION](#)



[\(/projects/334529/images/5555865/zoom\)](https://projects/334529/images/5555865/zoom)

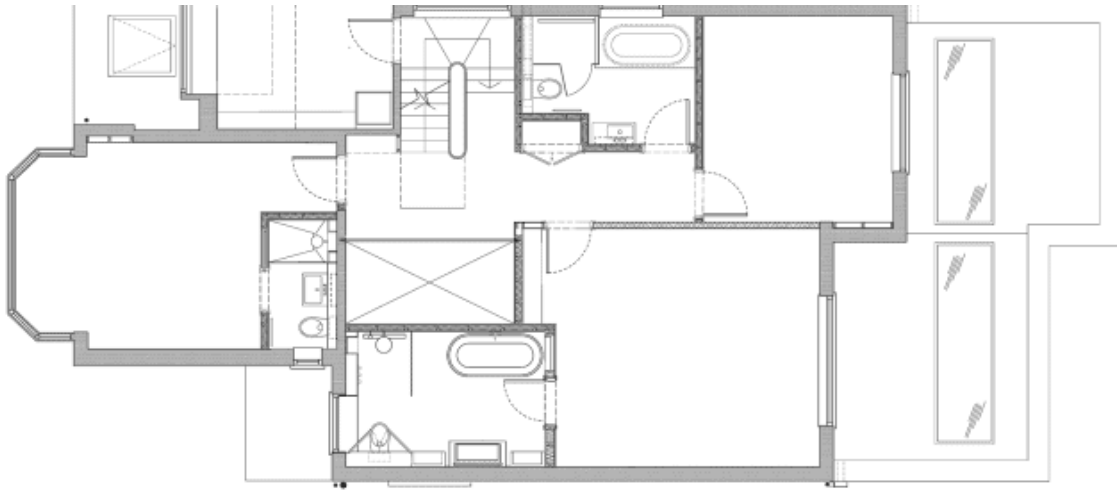
© MATT CLAYTON

[ADD TO COLLECTION](#)

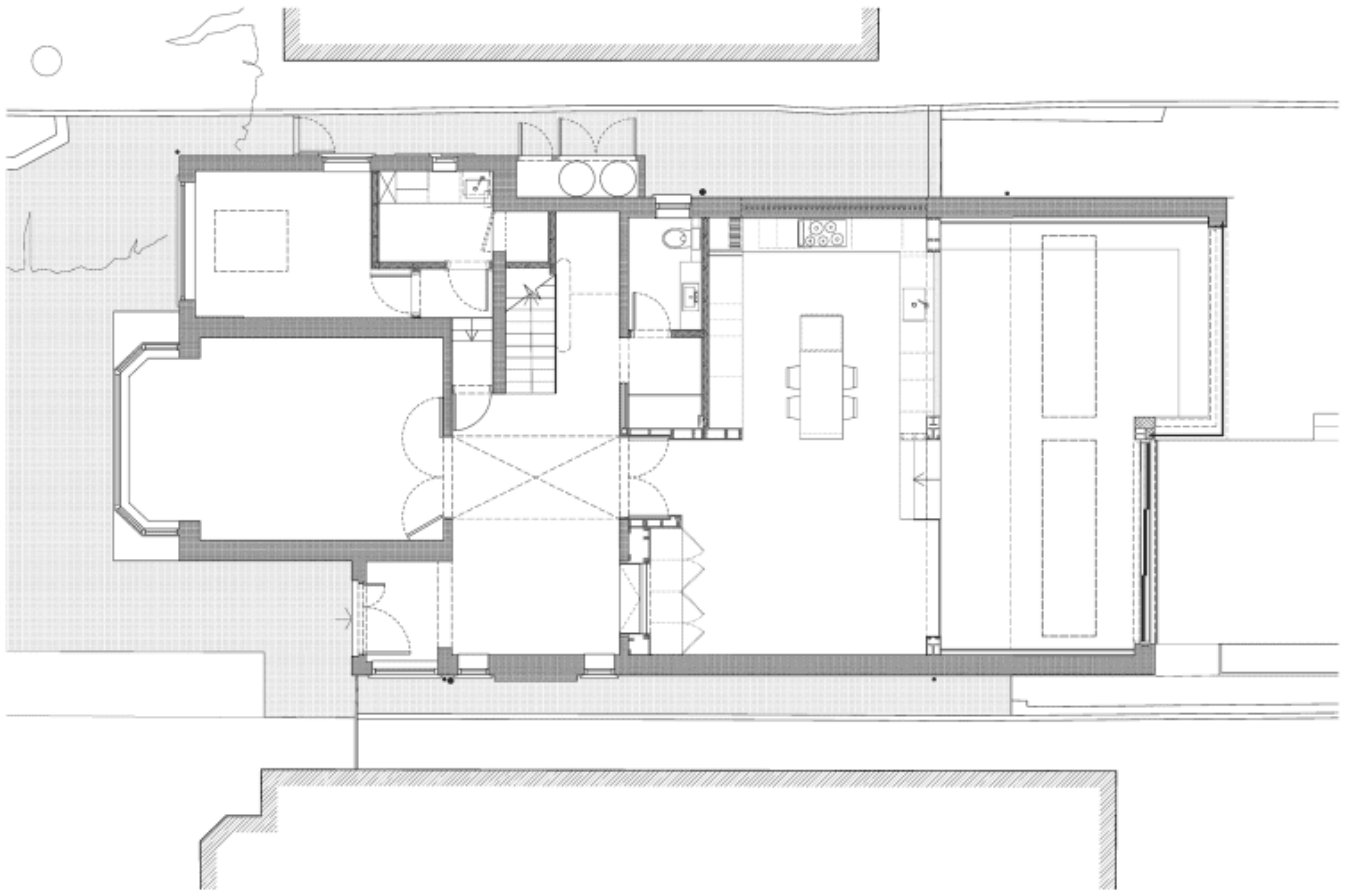


Second floor after completion





First floor after completion

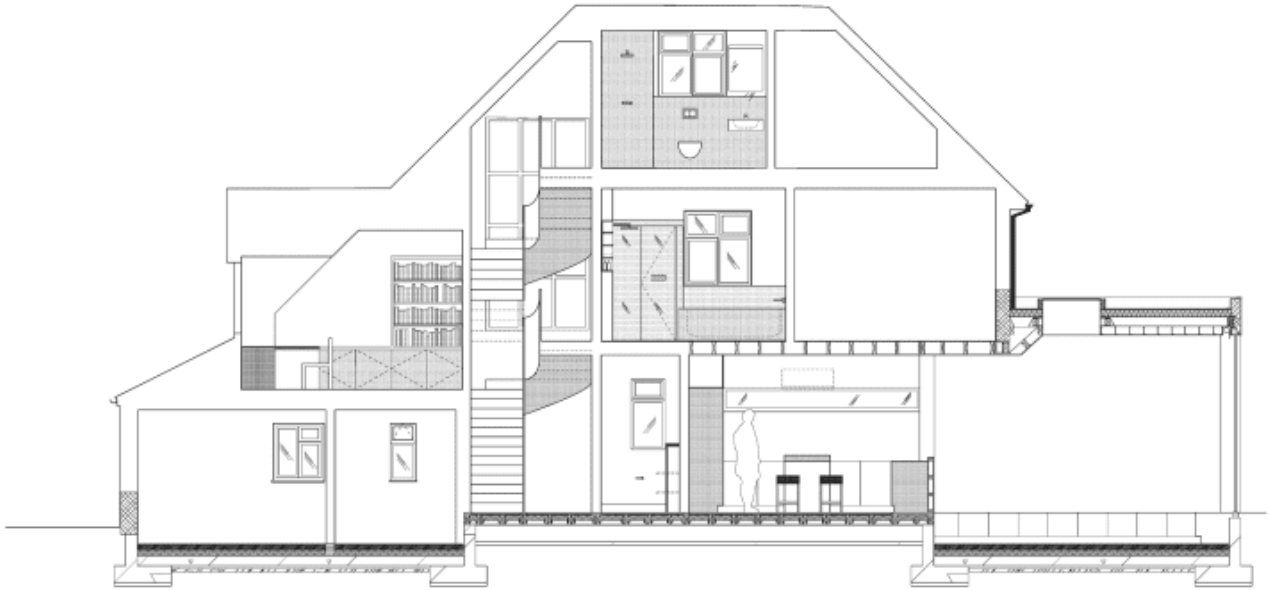


Ground floor after completion

[\(/projects/334529/images/5555889/zoom\)](http://projects/334529/images/5555889/zoom)

© ROBERT HIRSCHFIELD ARCHITECTS

[ADD TO COLLECTION](#)



Long section after completion

[\(/projects/334529/images/5555891/zoom\)]((/projects/334529/images/5555891/zoom))

© ROBERT HIRSCHFIELD ARCHITECTS

[ADD TO COLLECTION](#)

PUBLISHED ON JANUARY 09, 2017

LOCATION

UNITED KINGDOM - LONDON

DESIGNER

[ROBERT HIRSCHFIELD ARCHITECTS \(/AUTHORS/2144803976-ROBERT-HIRSCHFIELD-ARCHITECTS\)](/AUTHORS/2144803976-ROBERT-HIRSCHFIELD-ARCHITECTS)

PROJECT YEAR

2016

CREDITS

STRUCTURES

CONISBEE

COLLABORATORS

FOWLER & CO (STAIRCASE DESIGNER & MAKER)

PHOTO

MATT CLAYTON PHOTOGRAPHY

COST

TROGAL GRIFFIN ASSOCIATES

GENERAL CONTRACTORS

VITAL BUILDING SERVICES

INFORMATIONS

[Terms of Service \(http://divisare.com/tos\)](http://divisare.com/tos)

[Privacy \(http://divisare.com/privacy\)](http://divisare.com/privacy)

[About \(http://divisare.com/about\)](http://divisare.com/about)

[Slow web \(http://divisare.com/slow-web\)](http://divisare.com/slow-web)

[On the side of the photographers \(http://divisare.com/on-the-side-of-the-photographers\)](http://divisare.com/on-the-side-of-the-photographers)

[Why Atlas? \(http://divisare.com/why-atlas\)](http://divisare.com/why-atlas)

[How to appear on the homepage? \(http://divisare.com/how-to-appear-on-the-homepage\)](http://divisare.com/how-to-appear-on-the-homepage)

[Divisare Curating Philosophy \(http://divisare.com/divisare-curating-philosophy\)](http://divisare.com/divisare-curating-philosophy)

[What does divisare mean? \(http://divisare.com/what-does-divisare-mean\)](http://divisare.com/what-does-divisare-mean)

[Architettura-italiana \(.com\) \(http://divisare.com/architettura-italiana-com\)](http://divisare.com/architettura-italiana-com)

[Submission Guidelines \(http://divisare.com/submission-guidelines\)](http://divisare.com/submission-guidelines)

[Help Center \(http://divisare.com/help-center\)](http://divisare.com/help-center)

[Contacts \(http://divisare.com/contacts\)](http://divisare.com/contacts)

LINKS

[Europaconcorsi \(http://europaconcorsi.com\)](http://europaconcorsi.com)

[Architettura Italiana \(http://architettura-italiana.com\)](http://architettura-italiana.com)

[Top Designers \(http://divisare.com/designers\)](http://divisare.com/designers)

[Top Photographers \(http://divisare.com/photographers\)](http://divisare.com/photographers)

[Selected Projects \(http://divisare.com/selected-projects\)](http://divisare.com/selected-projects)

[Frontcovers \(http://divisare.com/frontcovers\)](http://divisare.com/frontcovers)

[Twitter \(http://www.twitter.com/divisare\)](http://www.twitter.com/divisare)

[Facebook \(http://www.facebook.com/divisare\)](http://www.facebook.com/divisare)

[Pinterest \(https://pinterest.com/divisare\)](https://pinterest.com/divisare)

[Instagram \(https://www.instagram.com/divisare\)](https://www.instagram.com/divisare)

[LinkedIn \(https://www.linkedin.com/company/divisare-com\)](https://www.linkedin.com/company/divisare-com)

ATLAS OF ARCHITECTURE

[General Index \(http://divisare.com/atlas-of-architecture\)](http://divisare.com/atlas-of-architecture)

[Topics \(http://divisare.com/atlas-of-architecture\)](http://divisare.com/atlas-of-architecture)

[Elements \(http://divisare.com/atlas-of-architecture\)](http://divisare.com/atlas-of-architecture)

[Types \(http://divisare.com/atlas-of-architecture\)](http://divisare.com/atlas-of-architecture)
[Cities \(http://divisare.com/atlas-of-architecture\)](http://divisare.com/atlas-of-architecture)
[Plans & Details \(http://divisare.com/atlas-of-architecture\)](http://divisare.com/atlas-of-architecture)
[Ideas \(http://divisare.com/atlas-of-architecture\)](http://divisare.com/atlas-of-architecture)
[Houses \(http://divisare.com/atlas-of-architecture\)](http://divisare.com/atlas-of-architecture)
[Interiors \(http://divisare.com/atlas-of-architecture\)](http://divisare.com/atlas-of-architecture)
[Materiality \(http://divisare.com/atlas-of-architecture\)](http://divisare.com/atlas-of-architecture)

TOP ATLAS

[Architectural Models \(http://divisare.com/architectural-models\)](http://divisare.com/architectural-models)
[Atriums \(http://divisare.com/atriums\)](http://divisare.com/atriums)
[Belgian Houses \(http://divisare.com/belgian-houses\)](http://divisare.com/belgian-houses)
[Beniamino Servino. Monumental Need \(http://divisare.com/beniamino-servino-monumental-need\)](http://divisare.com/beniamino-servino-monumental-need)
[Beyond Minimal \(http://divisare.com/beyond-minimal\)](http://divisare.com/beyond-minimal)
[Exploring Patterns \(http://divisare.com/exploring-patterns\)](http://divisare.com/exploring-patterns)
[Handmade \(http://divisare.com/handmade\)](http://divisare.com/handmade)
[Interiors in Lisbon \(http://divisare.com/lisbon-interiors\)](http://divisare.com/lisbon-interiors)
[Kitchens \(http://divisare.com/kitchens\)](http://divisare.com/kitchens)
[Libraries \(http://divisare.com/libraries\)](http://divisare.com/libraries)
[Light & Shadows \(http://divisare.com/light-shadows\)](http://divisare.com/light-shadows)
[Nervi Factor \(http://divisare.com/nervi-factor\)](http://divisare.com/nervi-factor)
[Plans of Single-family Houses \(http://divisare.com/plans-of-single-family-houses\)](http://divisare.com/plans-of-single-family-houses)
[Radical Resistance \(http://divisare.com/radical-resistance\)](http://divisare.com/radical-resistance)
[Steven Holl. Working With Doubts \(http://divisare.com/steven-holl-working-with-doubts\)](http://divisare.com/steven-holl-working-with-doubts)

EMAIL NEWSLETTER

DIVISARE JOURNAL

Join a deep and provocative exploration of contemporary architecture with DIVISARE Curators

SUBSCRIBE ([HTTP://JOURNAL.DIVISARE.COM/](http://journal.divisare.com/))

[SEE SAMPLE \(HTTP://DIVISARE.COM/JOURNALS/90\)](http://divisare.com/journals/90)

DIVISARE is Proudly Made in Rome by Europaconcorsi Srl PI 06600401001